

CNMI CENTRAL DIRECTORY





CNMI Public School System

Early Intervention Program

PO BOX 501370 CK

Saipan MP 96950

Permission is granted to reproduce any and all parts of this directory if credit is given to CNMIPSS-EIP. The directory is available in PDF format on the CNMIPSS website at www.mycnmipss.org. Every effort has been made to ensure the accuracy of the information contained in this directory. If there have been any changes since the date of publication, please fax these changes to CNMIPSS-EIP at 670-664-4846.

For additional information or questions about the Early Intervention Program, contact EIP at 670-664-4841 or visit our website at www.mycnmipss.org.

© 2020 Early Intervention Program

INTRODUCTION

A Message from The CNMI Public School System's

Early Intervention Program

Hafa Adai!

Welcome to the Early Intervention Program. It is our goal to provide family centered services to support you in fulfilling your role as parents, to meet the developmental needs of your child.

The Central Directory was developed as a resource to assist you in identifying, locating, and contacting the appropriate services and supports you may need for your child and family. We hope you will find this directory of services helpful to you.

For more information about the Early Intervention Program or the CNMI Public School System, please visit our website at www.mycnmipss.org.

Thank You,

Robin Lizama Palacios, MA SpEd

Director

Early Intervention Program

Table of CONTENTS

Introduction.....	3
Table of Contents.....	4
Early Intervention Program.....	5
Emergency Contacts.....	6
Emergency Preparedness.....	7-8
Health Services	9-17
Government Agencies.....	18-22
Family Supports and Resources.....	22-24
Day Care Centers.....	25
CNMI Public School System	26-30
Private School Listing.....	31
Developmental Checklist.....	32-33
IDEA	34-35

Early Intervention Program

Early Intervention services are provided to eligible infants and toddlers (birth to three years old) with disabilities and their families.

Since 1987, the Public School System, in collaboration with the Commonwealth HealthCare Corporation, has provided Early Intervention Services to eligible infants and toddlers and their families. The Public School System, as the lead agency, is responsible for the general supervision, monitoring and implementation of Early Intervention Services within the CNMI.

It is our mission to promote collaborative relationships among agencies and families in order to maximize our children's potential and build respect for cultural values and family choices.

It is the Public School System's goal to ensure:

- » All infants and toddlers with disabilities or developmental delays are identified, evaluated, and provided early intervention services by qualified individuals.
- » All eligible infants and toddlers and their families receive early intervention services in natural environments appropriate for the child.
- » The outcomes for infants and toddlers and their families are enhanced by family-centered supports and services.
- » That all children and families are provided supports and services needed to ensure a smooth transition when they exit the Early Intervention Program.

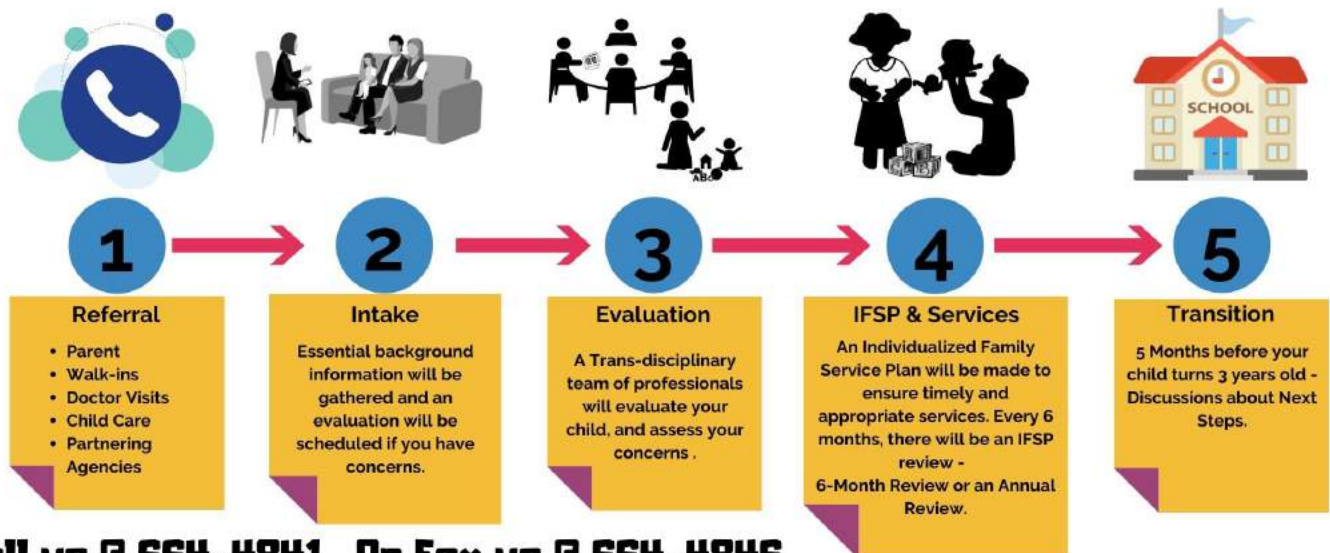


<https://www.facebook.com/CNMIEARLYINTERVENTIONPROGRAM/>



www.mycnmipss.org

EARLY INTERVENTION SERVICES



Call us @ 664-4841 Or Fax us @ 664-4846

EMERGENCY CONTACTS

FOR EMERGENCIES **CALL 911**

Department of Public Safety (DPS)

<http://www.dps.gov.mp/>



SAIPAN	PO BOX 500791 Civic Center, Susupe Saipan, MP 96950
DPS Operator	664-9000
Emergency Medical Services (EMS):	664-9135/6

ROTA	PO BOX 917 Rota, MP 96950
Emergency Medical Services (EMS):	532-0911 532-9081

TINIAN	PO BOX 911 Rota, MP 96950
Emergency Medical Services (EMS):	433-0911

EMERGENCY PREPAREDNESS

CNMI Homeland Security & Emergency Management

<http://www.cnmihsem.gov.mp/>



SAIPAN	322-8000 322-9529
ROTA	532-4700
TINIAN	433-3662

IN THE EVENT OF A NATURAL DISASTER, BE INFORMED AND PREPARED.

MAKE A KIT	MAKE A PLAN
<ul style="list-style-type: none"> ◆ Potable Water ◆ Supply of canned and dried goods. ◆ First Aid Kit and medications ◆ Flashlights and extra batteries ◆ Propane Stove and extra Propane Gas ◆ Blankets/Clothing ◆ Basic Toiletries - Soap, baby wipes, etc. ◆ Baby supplies - formula, food, 	<ul style="list-style-type: none"> ◆ Designate a place to meet if you and your family gets separated. ◆ Establish a buddy system with you and your family. ◆ Make a plan on how to secure your house. ◆ Share your plan with your family ◆ Prepare a list of emergency contact numbers.



BE INFORMED:

Have your kit ready to go in case of an emergency. Make sure all family members are aware of your plan. STAY CALM and DON'T PANIC.

VISIT OUR OFFICE FOR MORE INFORMATION AND PUBLICATIONS.

TSUNAMI WARNING:

SAIPAN EVACUTATION ROUTE:

- ◆ San Antonio go to Koblerville
- ◆ Chalan Piao, Chalan Kanoa and Susupe to As Lito and As Perdido
- ◆ Civic Center, San Jose, Chalan Laulau & Chalan Kiya go to Northern Marianas College
- ◆ Sadog Tasi & Tanapag go to Capitol Hill
- ◆ Achugao & San Rogue go to As Matuis



ROTA EVACUTATION ROUTE:

- ◆ All villages near water front & low-lying areas go too Taimama area or Ka'an area.

TINIAN EVACUATION ROUTE:

- ◆ All villages near water front & low-lying areas go to Marpo Heights or Carolinas Heights.

TYPHOON WARNING:

- ◆ Listen to local radio, TV or log on to our Web Page for information
- ◆ Prepare to board up all windows. (Install typhoon shutters or precut plywood for each window. Install anchors for plywood and pre-drill holes in the plywood for easy installing.
- ◆ Bring objects inside that could fly around. (i.e. trash cans, bikes, toys and lawn furniture)
- ◆ Begin to assemble a disaster supply kit.
- ◆ Recheck manufactured home shutters.
- ◆ Keep Family Safety Emergency Plan handy with phone.
- ◆ Fill up your vehicle with fuel.
- ◆ Identify several places you can go if told to evacuate. (i.e. friend's home, motel/hotel)



HEALTH SERVICES

HEALTH TIPS:

- ◆ Eat foods that are good for you: local vegetables, fruits, grains, and dairy products.
- ◆ Get daily exercise: walk with your baby or play outside with your toddler.
- ◆ NEVER shake your baby or throw your baby: this may cause your baby's brain to swell, bleed and bruise which can cause blindness, seizures, mental retardation, other disabilities and even death.
- ◆ Arrange for your child to receive regular check-ups and scheduled immunizations.
- ◆ Take your child to the hospital or clinic when he/she is ill or you have questions about their health.
- ◆ Be sure to ask what type of insurance (including Medicaid) the clinic/doctor accepts.
- ◆ Ask what type of payments are accepted (cash, credit card, check).
- ◆ Have necessary information and documentation required at the clinic (health history, allergies, medication dosage, guardianship documentation, hospital card, insurance card, Medicaid card, etc.).
- ◆ Wash your hands—the CDC recommends you scrub your hands for at least 20 seconds; and use hand sanitizer when you can't use soap and water.—www.cdc.gov
- ◆ Stay up to date with the latest information regarding health advisories and directives.
- ◆ Visit www.CDC.GOV/ or www.WHO.IT/ for more health tips and information.

Stay SAFE CNMI!





Hospitals

SAIPAN

Commonwealth HealthCare Corporation

Lower Navy Hill

PO BOX 500409

Saipan, MP 96950

Telephone: 234-8950

COVID-19 Info Line: 285-1352

Mental Health Support Line: 285-1856



ROTA

Rota Health Center

Songsong Village

PO BOX 1249

Rota, MP 96951

Telephone: 532-9461/2-4

532-0954

Fax: 532-0725



TINIAN

Tinian Health Center

San Jose Village

PO BOX 446

Tinian, MP 96952

Telephone: 433-9233/63





MEDICAL CLINICS

* Hours of operation may change, contact directly for accurate schedule(s).

CLINIC	HOURS OF OPERATION	CONTACT INFORMATION
FHP Health Center 2nd Floor, TSL Plaza PO BOX 500118 Saipan, MP 96950	Mon-Tue: 8:00am—5:00pm Wednesday: 8:30am—5:00pm Thurs-Fri: 8:00am—5:00pm Closed: Weekends and Holidays.	Telephone: 235-0994/6-8 Fax: 234-3742 24HR: 671-647-3526 TOLL Free: 1-877-484-2411
Marianas Medical Center Beach Road, Garapan PO BOX 5006 Saipan, MP 96950	Mon-Fri: 8:00am—5:00pm Sat: 9:00am—4:00pm	Telephone: 234-3926 234-3927 Fax: 234-3950 E-Mail: tstearns@itecnmi.com
Medical Associates of the Pacific Marianas Heights Business Park, Puerto Rico PO BOX 500938 Saipan MP, 96950	Mon-Fri: 8:00am—5:00pm Sat: 8:30am—11:30am	Telephone: 323-9000 Fax: 323-9010
Pacific Medical Center PO BOX 501908 Saipan, MP 96950	Mon-Fri: 8:00am—11:00am 1:00pm—3:30pm Sat & Sun: Closed	Telephone: 233-1613 233-8100 233-8101 Fax: 233-8102
Saipan Health Clinic/ St.Jude Renal Care Chalan Kiya PO BOX 502878 Saipan, MP 96950	Mon—Fri: 8:00am—6pm Sat: 8:00am—1pm	Telephone: 234-2901 234-2902 234-2903 Fax: 234-2906



DENTAL SERVICES

* Hours of operation may change, contact directly for accurate schedule(s).

CLINIC	HOURS OF OPERATION	CONTACT INFORMATION	
Dental Care Middle Road, Garapan PMB 807 PO BOX 10001 Saipan, MP 96950	Mon-Fri: 8:00am—5:00pm	Telephone:	233-1100
	Saturday: 9:00am—3:00pm	Fax:	233-2233
	Closed on Weekends		
Seventh Day Adventist Chalan Laulau PO BOX 501063 Saipan, MP 96950	Mon-Thurs: 7:00am—6:00pm	Telephone:	234-6323
	Friday: 7:00am—1:00pm	Emergency:	287-6323
		Fax:	234-0521
		E-Mail:	info@saipansdaclinic.com
Toothworks TSL Plaza Beach Road, Garapan PO BOX 504699 Saipan, MP 96950	Tue-Sat: 9:00am—4:30pm	Telephone:	234-3810
			234-3814
		Fax:	234-3820
CHCC Dental Clinic Navy Hill, Saipan	Mon-Fri: 7:30am—11:30am	Telephone:	236-8369
	12:30pm—4:00pm		236-8744
		Fax:	236-8700
Paradise Dental Clinic Middle Road, Gualo Rai Saipan, MP 96950	Office Hours: 8:00am—5pm	Telephone:	234-4040

- ◆ **New Wave Dental—Telephone: 233-3300**
- ◆ **Smile Marianas—Telephone: 235-3720 or 2378, Fax: 235-3722**

PUBLIC/POPULATION HEALTH PROGRAMS	CONTACT INFORMATION
Maternal Child Health Bureau (MCHB)	Telephone: 664-8701
Children with Special Healthcare Needs	Telephone: 664-8701
Healthy Outcome for Maternal and Early-Childhood (HOME) Visiting Program	Telephone: 664-8702
Early Hearing Detection & Intervention Program (EHDI)	Telephone: 236-8709 Fax: 236-8714
Family Planning	Telephone: 664-8701
Non-Communicable Disease Bureau (NCDB)	Telephone: 236-8745 ext.2130
HIV/STD Resource and Treatment Center	Telephone: 664-4050/3/5/7 Fax: 664-4051
Immunization Program - SAIPAN	Telephone: 236-8745/08/80/81/83
Immunization Program - ROTA	Telephone: 532-9461
Immunization Program - TINIEN	Telephone: 433-9233
Chest Clinic - SAIPAN	Telephone: 236-8376/8377
Emergency Preparedness Program	Telephone: 236-8207
Cancer Prevention, Care, and Screening	Telephone: 236-8731

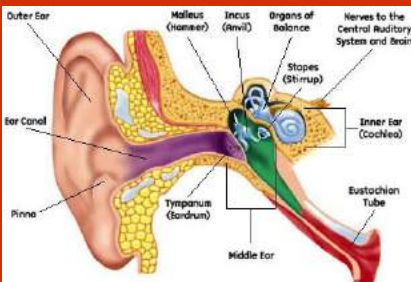


VISION SERVICES

* Hours of operation may change, contact directly for accurate schedule(s).

CLINIC	Hours of Operation	Contact Information
Hardt Eye Clinic Incorporated Beach Road, Garapan PO BOX 504768 CK Saipan, MP 96950	Mon, Tues, Thurs, Fri: 8:00am—5:00pm Wed: 10:00am—7pm Saturday: 9:00—1:00pm	Telephone: 235-2030 Fax: 235-2033
Marianas Eye Institute Beach Road, Garapan PO BOX 503900 CK Saipan, MP 96950	Mon-Sat: 8:00am—5:00pm	Telephone: 235-9090/2 Fax: 235-9091 Website: www.marianaseye.com

VISIT OUR OFFICE FOR MORE INFORMATION



HEARING AUDIOLOGY SERVICES

CLINIC	Hours of Operation	Contact Information
Division of Public Health Maternal & Child Health Program Navy Hill PO BOX 500409 Saipan, MP 96950	Mon-Thurs: 7:30am—4:30pm	Early Hearing Detection & Intervention Program (EHDI) Telephone: 236-8709 234-8950



PSYCHOLOGICAL SERVICES

* Hours of operation may change, contact directly for accurate schedule(s).

CLINIC	Hours of Operation	Contact Information
<p>Pacific Clinical & Consulting Marianas Business Plaza Susupe PO BOX 5700 CHRB Saipan, MP 96950</p>	<p>CALL FOR AN APPOINTMENT</p> <p>Provides a complete range of psychological services including individual and family counselling, infant, toddler, child and adult evaluations, psychological testing, cognitive training, parent training and consultation.</p>	<p>Telephone: 322-1925 Fax: 322-1926 E-Mail: Adrian.brenn@pacificclinical.com Anne.erhard@pacificclinical.com</p>
<p>Stafford Consulting</p>	<p>CALL FOR AN APPOINTMENT</p> <p>Provides parent education training, counseling, case management and assessments related to mental health and social issues.</p>	<p>Telephone: 285-0937 Andrea Stafford, LCSW</p>





OUTPATIENT SERVICES

* Hours of operation may change, contact directly for accurate schedule(s).

CLINICS	Hours of Operation/ Description of Services	Contact Information
Eucon Medical Health PO BOX 500087 Saipan, MP 96950	Mon-Fri: 8:00am—5:00pm Outpatient Physical Therapy services.	Telephone: 233-3647 E-Mail: emhs@pticom.com
Marianas Health Services Beach Road, San Jose PMB 1341 PO BOX 10003 Saipan, MP 96950	Mon-Fri: 8:00am—5:00pm Intermittent medical services provided to patients in the comfort of their homes, such as Skilled Nursing, Physical Therapy, IV Therapy, and Home Health Aide Services.	Telephone: 233-4646 Fax: 233-4648 E-Mail: info@marianashealth.com Website: www.marianashealth.com
Shriners Outreach Clinic Through the Division of Public Health	Services available twice a year (typically January and June) Please call to set up an appointment. Provides care for children with bone, joint and neuromuscular conditions.	Telephone: 236-8714 E-Mail: smoperez15@gmail.com

CHCC OUTPAIENT CLINICS

Family Care Clinic: Monday—Friday; 7:30am to 4:30pm; Closed on all Holidays and Weekends.

Telephone: 670-234-8950

Children’s Clinic: Monday—Friday; 7:30am to 4:30pm; Closed on all Holidays and Weekends.

Telephone: 670-234-8950

Women’s Clinic: Monday—Friday; 7:30am to 4:30pm; Closed on all Holidays and Weekends.

Telephone: 670-234-8950

NON-EMERGENT AMBULANCE TRANSPORTATION SERVICE

NAME	DESCRIPTION OF SERVICE	CONTACT INFORMATION
Priority Care PO BOX 501856 Saipan, MP 96950	Provides non-emergent ambulance transportation to patients to and from appointments.	Telephone: 234-2273
St. Michael's Medical Response PO BOX 500173 Saipan, MP 96950	Provides ambulance transportation to patients with disabilities and critical conditions, to and from the clinic.	Telephone: 233-4585
Commonwealth Office of Transit Authority Saipan Call A Ride Saipan, MP 96950	Provides transportation for individuals with disabilities and accompanying family members. Contact for rates.	Telephone: 664-2690



PHARMACIES

* Hours of operation may change, contact directly for accurate schedule(s).

NAME	HOURS OF OPERATION	CONTACT INFORMATION
Brabu Pharmacy & Wellness PMB 761 PO BOX 10003 Saipan, MP 96950	Mon-Fri: 9:00am—6:00pm Sat: 9:00am—1:00pm	Telephone Gualo Rai: 233-2668 Telephone MH II: 322-4898 Telephone Kagman: 256-2668 www.brabupharmacy.com/
PHI Pharmacy PO BOX 505089 Saipan, MP 96950	Dandan/ Navy Hill: Mon-Fri: 8:00am—6:00pm Dandan Sat: 8:00am—4:00pm Navy Hill	Telephone Navy Hill: 323-5000 Telephone Dandan: 235-6170



GOVERNMENT AGENCIES

NAME	Description of Service	Contact Information	
<p>Adult Basic Education Program Northern Marianas College PO BOX 501250 Saipan, MP 96950</p>	<p>Provide high school diplomas to individuals who are at the age of 17 or older who have been out of school for at least 6 months and is a CNMI resident, US Citizen, FAS Citizen or non-alien IR. The program itself consists of two phases: Academic Skills and Career Skills. To also allow individuals to prosper in life, they are encouraged to cross-register with other instructional opportunities of the program.</p>	<p>Telephone: 237-6713 Fax: 235-4940</p>	
<p>Child Care Program Department of Community & Cultural Affairs PO BOX 10007 Saipan, MP 96950</p>	<p>Child care assistance to parents who are low income and are in education, employment or job training. After school and summer school programs are also offered.</p>	<p>Telephone: 664-2575 664-2576 Fax: 664-2570</p>	
<p>Early Intervention Program CNMI Public School System Early Intervention Program PO BOX 501370 CK Saipan, MP 96950</p>	<p>To locate, identify and provide Early Intervention services to infants and toddlers (birth to three years old) and their families who display at least a 25% delay in one or more of the developmental areas or are born with an established condition. Services are designed to meet the unique needs of the child and family, based on the family's concerns, priorities and resources. An Individualized Family Service Plan (IFSP) is developed and services are provided in the child's natural environment.</p>	<p>Telephone: 664-4841 Fax: 664-4846 Website: www.cnmipssoare.org</p>	
<p>CNMI Council on Developmental Disabilities PO BOX 502565 Saipan, MP 96950</p>	<p>TO bring about necessary systemic change, enhance quality of life and opportunities for people with developmental disabilities in the CNMI to become independent, productive, integrated and fully included in the community; to ensure that service networks are providing people with developmental disabilities the necessary programs that would enable them to reach their maximum potential.</p>	<p>Telephone: 664-7000 Fax: 664-7030</p>	

NAME	Description of Service	Contact Information
<p>CNMI State Office on Aging PO BOX 502178 Saipan, MP 96950</p>	<p>To develop, coordinate and deliver support services to the CNMI elders and to assist the Senior Citizens in maintaining their independence. It is the program's responsibility to pro-actively implement a wide range of functions relative to planning and advocacy for system designated to assist older persons to lead a meaningful and dignified lives.</p>	<p>SAIPAN Telephone: 233-1321 Fax: 233-1327 ROTA Telephone: 532-9476 Fax: 532-9475 TINIAN Telephone: 433-9220 Fax: 433-2029</p>
<p>Community Guidance Center CHCC PO BOX 500409 Saipan, MP 96950</p>	<p>To provide access to mental/behavioral health and substance abuse services thus improving the physical, social, emotional, and psychological well-being of the people of the CNMI. Services include outpatient psychiatric, substance abuse, behavioral and preventive health services for adults, children and adolescents.</p>	<p>Telephone: 664-4604 Fax: 236-8700</p>
<p>Cooperative Research, Extension, Education Service (CREES) Northern Marianas College PO BOX 5000125 Saipan, MP 96950</p>	<p>To educate the community about the importance of healthy eating and food label reading, for nutrition information on food products.</p> <p>EFNEP (Expanded Food and Nutrition Education Program), Family and Child Development, Community Resource Development, Food and Safely Education, Money Management and Consumer Education, and 4H Youth Development Program.</p>	<p>SAIPAN Telephone: 237-6840 Fax: 234-0544 ROTA Telephone: 237-6832/3 TINIAN Telephone: 237-6832/3</p>
<p>Division of Youth Services DYS-DCCA PO BOX 501000 Saipan, MP 96950</p> <p>The Child Protection Unit is the agency mandated by law to conduct an initial assessment or investigation of child abuse & neglect. It also offers other services to families and children where abuse has occurred or is likely to occur. This agency receives reports of suspected abuse/neglect, identifies and protects children who are abused or neglected, and coordinates family services to reduce the risk of maltreatment.</p>	<p>Child Protective Services, juvenile correction/probation, juvenile detention, parent education program, and volunteer program. 24-hour crisis intervention all year round; protective custody, emergency shelter, foster care; professional counseling by a certified therapist; referrals to appropriate agencies; parent education classes; public education, prevention and awareness on child welfare, youth and family issues; juvenile probation; control of juvenile offenders; home visitation/monitoring; home study reports for adoption & placement matters.</p>	<p>SAIPAN Telephone: 237-1000 ROTA Telephone: 532-9393 TINIAN: 433-9272</p> <p>CHILD PROTECTIVE UNIT Telephone: 237-1005-13</p>

NAME	Description of Service	Contact Information
<p>Division of Nutrition Assistance Program</p> <p>DCCA-NAP</p> <p>PO BOX 501488</p> <p>Saipan, MP 96950</p>	<p>The program is 100% federally funded, to provide assistance to the needy families in the CNMI. In support for the CNMI local economy, the program also issues out local Coupons strictly for purchase of local products (i.e. local fish, agricultural products and bakery goods); the U.S. regular Coupons may purchase imported foods and other eligible items.</p>	<p>SAIPAN Telephone: 237-2800 237-2843</p> <p>ROTA Telephone: 532-9354</p> <p>TINIAN Telephone: 433-9330</p>
<p>Family Court Division</p> <p>CNMI Superior Court</p> <p>PO BOX 500409</p> <p>Saipan, MP 96950</p>	<p>To ensure the people of the CNMI an independent judiciary providing impartial, timely, sensitive and accountable judicial services and the continuous pursuit of judicial excellence.</p>	<p>Telephone: 236-9840</p> <p>Fax: 236-9744</p>
<p>Joeten-Kiyu Public Library</p> <p>PO BOX 501092</p> <p>Saipan, MP 96950</p>	<p>Allows the community and all interested individuals to come and visit the library and take advantage of the many books and magazines for all ages it has to offer. Builds collaboration within the CNMI and promotes literacy at the maximum level. They also have a variety of children books and encourages any person who is six years and older to visit the library and obtain a library card at no charge.</p>	<p>Telephone: 235-7322</p> <p>Fax: 235-7500</p> <p>E-Mail: saipanlib@cnmilibrary.com</p>
<p>Low Income Home Energy Assistance Program</p> <p>DCCA-LIHEAP</p> <p>CALLER BOX 10007</p> <p>Saipan, MP 96950</p>	<p>Provides electrical payment assistance to help low-income families meet their utility costs. This is done by providing affordable energy efficient products through the provision of rebates to LIHEAP households that invest in energy efficient refrigerators and A/C? units, the arrangement of in-store demonstrations and sales of energy efficient products targeting low-income families, and the organizations of an Energy Conservation Fair coinciding with vendor sales.</p>	<p>SAIPAN</p> <p>Telephone: 664-2572</p> <p>Fax: 664-2570</p> <p>ROTA</p> <p>Telephone: 532-9354</p> <p>TINIAN</p> <p>Telephone: 433-9233</p>
<p>Medicaid Agency</p> <p>CHCC-DPH</p> <p>PO BOX 500409</p> <p>Saipan, MP 96950</p>	<p>Assisting low-income persons and their families with their medical needs and must meet the current SSI income and resource levels and any applicable disregards and exemption for the determination of eligibility. Medicaid basically pays hospital stays, doctor's bills, prescription drugs and other health costs.</p>	<p>SAIPAN Telephone: 664-4880</p> <p>Fax: 664-4885</p> <p>ROTA Telephone: 532-9461</p> <p>TINIAN Telephone: 433-9233</p>

NAME	Description of Service	Contact Information
<p>Northern Marianas Housing Corporation</p> <p>PO BOX 500514</p> <p>Saipan, MP 96950</p>	<p>To provide these services, most especially, to low and moderate income individuals/families to ensure that elderly, persons with disabilities and most needy to be afforded fair and equal opportunity to housing programs. To encourage self-sufficiency and instill personal responsibility in home ownership; to implement home ownership programs to increase owner-occupied family residential dwellings that are safe, decent, sanitary, and affordable.</p>	<p>SAIPAN Telephone: 234-6866/7689</p> <p>FAX: 234-9021</p> <p>ROTA Telephone: 532-9410</p> <p>FAX: 532-9441</p> <p>TINIAN Telephone: 433-9213</p> <p>E-Mail: nmhc@gtepaciffica.net</p>
<p>Office of Vocational Rehabilitation Office of the Governor</p> <p>PO BOX 501521</p> <p>Saipan, MP 96950</p>	<p>The mission of the Office of Vocational Rehabilitation is to increase employment and promote independence among eligible individuals with disabilities throughout the Commonwealth of the Northern Mariana Islands.</p>	<p>Telephone: 322-6537/8</p> <p>TDD: 322-6449</p> <p>Fax: 322-6536</p>
<p>University Center for Excellence in Developmental Disabilities Northern Marianas College</p> <p>PO BOX 501250</p> <p>Saipan, MP 96950</p>	<p>Is committed to the development of culturally complimentary outcomes while promoting equal opportunity, independence, productivity, promoting self-determination, and supporting an improved quality of life for people with developmental disabilities in their villages, the Commonwealth, and the world around us.</p>	<p>Telephone: 237-6801</p> <p>Fax: 234-1270</p>
<p>Women, Infant & Children CHCC-DPH-WIC</p> <p>PO BOX 500409</p> <p>Saipan, MP 96950</p>	<p>WIC provides specific nutritious foods and nutrition education to eligible pregnant women, postpartum women up to six months regardless of how pregnancy ends, breastfeeding women up to one year after delivery, and infants and children up to their fifth birthday. WIC participants receive monthly checks for the purchase of infant cereal, iron-fortified adult cereal, vitamin C rich fruit of vegetable juice, eggs, milk, cheese, peanut butter, dried and canned beans/peas, canned fish, soy-based beverages, tofu, fruits and vegetables, baby foods, whole wheat bread, and other whole-grain products. Foods covered may depend upon the nutritional needs of the individual.</p>	<p>Telephone: 664-4083/4</p> <p>Fax: 664-4075</p>

NAME	Description of Service	Contact Information
Women & Children's Clinic CHCC-DPH PO BOX 500409 Saipan, MP 96950	<p>To ensure that comprehensive health care is provided to all mothers, infants, children, including children with special health care needs.</p> <p>Preventative and primary care, immunization, prenatal care, pediatric care, well child care, reproductive health, specialty clinics, early prevention, children with special health care needs.</p>	Telephone: 236-8371 234-8930 236-8374
Workforce Investment Agency Office of the Governor Executive Branch Caller Box 10007 Saipan, MP 96950	<p>To increase the employment retention and earnings of participants, and increase occupational skill attainment by the participants, and as a result, improve the quality of the workforce, reduce welfare dependency and enhance the productivity and competitiveness of the local workforce.</p>	Telephone: 664-1704

FAMILY SUPPORTS

NAME	DESCRIPTION OF SERVICE	CONTACT INFORMATION
Autism Society of the CNMI PO BOX 506284 Saipan, MP 96950	<p>The ASCNMI is a group that is open to all people whose lives have been touched by autism and its related spectrum disorders.</p> <p>This group provides support and information about autism, as well as promotes, protects, and advocates for the rights of all individuals with autism or its related spectrum disorders living in the CNMI.</p>	Telephone: 235-7273 TTY: 235-7278 Fax: 235-7275
Ayuda Network—Commonwealth Respite Service Program PO BOX 503019 Saipan, MP 96950	<p>Their mission is to help the economically underprivileged, socially exploited and oppressed, and educationally and occupationally underprepared. The Network is charged to prevent and intervene with the growing cases of juvenile delinquency, drug abuse, family violence, social biases and other social problems.</p> <p>Their purpose is to foster communication, coordination, collaboration and support among Social/human service providers in the CNMI and to address critical social programs.</p>	Telephone: 322-7469 Fax: 322-7468 E-Mail: crsp.ayudanet@gmail.com

NAME	Description of Service	Contact Information
<p>Karidat, Inc. PO BOX 500745 Saipan, MP 96950</p> <p>Guma Espersansa</p>	<p>Victim hotline, family services, victims of crime advocacy, guest worker assistance program, and youth development programs. Their purpose is to assist people of all economic levels in the community to address problems arising from personal or family problems, external circumstances, or interpersonal conflicts.</p> <p>GUMA ESPERANSA—Guma Esperansa provides sanctuary, counselling, and advocacy to meet the needs of victims of domestic violence and sexual assault. All shelter services are free and confidential and are available to victims and their children regardless of citizenship, ethnicity, or immigration status.</p>	<p>Telephone: 234-6981</p> <p>Fax: 234-9192</p> <p>E-Mail: karidat@pticom.com</p>
<p>Micronesia Legal Services Corporation PO BOX 500826 Saipan, MP 96950</p>	<p>Provide low income persons in Micronesia with free legal assistance in civil matters.</p>	<p>Telephone: 234-6243</p> <p>Fax: 235-6101</p>
<p>Northern Mariana Islands Protection & Advocacy System (NMPASI) PO BOX 503529 Saipan, MP 96950</p>	<p>Primary function is to protect the rights of individuals with disabilities through legally-based advocacy or representation support.</p>	<p>Telephone: 235-7273</p> <p>Fax: 235-7275</p> <p>Website: www.NMPASI.com</p>
<p>Northern Mariana Islands Council for the Motherread/Fatheread Literacy Program PO BOX 506437 Saipan, MP 96950</p>	<p>Nationally recognized, Motherread/Fatheread is a highly acclaimed literacy development program that is designed to help parents develop interactive activities for their children's reading, critical thinking, and problem solving. Motherread/Fatheread Program helps parents to become reading role models for their children. It also teaches them to make reading more fun for their children. It positively increases family bonding, communication, and relationship within the family.</p>	<p>Telephone: 235-7319</p> <p>235-4785</p> <p>Fax: 235-7550</p>
<p>US Social Security Administration PO BOX 500489 Saipan, MP 96950</p>	<p>To deliver Social Security services that meet the changing needs of the public. The agency's responsibilities include assigning Social Security numbers to US citizens, maintaining earnings records for workers under their Social Security numbers and administering the Supplemental Security Income program for the aged, blind, and disabled.</p>	<p>Telephone: 234-6203</p> <p>1-800-772-1213</p> <p>Fax: 234-3022</p> <p>Website: www.Socialsecurity.gov</p>

FAMILY RESOURCES

NAME	DESCRIPTION OF SERVICE	CONTACT INFORMATION
Individuals with Disabilities Education Act (IDEA)	<p>The Individuals with Disabilities Education Act (IDEA) is a law ensuring services to children with disabilities throughout the nation. IDEA governs how states and public agencies provide early intervention, special education and related services to more than 6.5 million eligible infants, toddlers, children and youth with disabilities.</p>	<p>WEBSITE: WWW.IDEA.ED.GOV</p>
Office of Special Education Programs (OSEP)	<p>The Office of Special Education Programs (OSEP) is dedicated to improving results for infants, toddlers, children, and youth with disabilities ages birth through 21 by providing leadership and financial support to assist states and local districts.</p>	<p>WEBSITE: WWW.ED.GOV</p>
Center for Parent Information & Resources (CPIR)	<p>Your central “Hub” of information and products created for the network of Parent Centers serving families of children with disabilities.</p> <p>NICHCY—Much of the rich library of materials and publications that NICHCY produced over the years has a new home here, on this website of the Center for Parent Information & Resources.</p>	<p>WEBSITE: WWW.PARENTCENTERHUB.ORG</p>
University of Guam-Center for Excellence in Developmental Disabilities Education, Research & Service (CEDDERS)	<p>Serves as a training and technical assistance provider in the Pacific Basin region. It is the largest training, service, and technical assistance center at the University.</p> <p>From its inception in 1993, Guam CEDDERS has evolved into a dynamic organization that aims to build bridges with partners for creating stronger linkages, programs, services, and support to positively impact the quality of life of individuals with developmental disabilities and their families.</p>	<p>WEBSITE: WWW.GUAMCEDDERS.ORG</p>
US Department of Education (US-DOE)	<p>The mission of the Department of Education is to promote student achievement and preparation for global competitiveness by fostering educational excellence and ensuring equal access.</p>	<p>WEBSITE: WWW.ED.GOV</p>
US Department of Health and Human Services - Center for Disease Control & Prevention (US—CDC)	<p>Collaborating to create the expertise, information, and tools that people and communities need to protect their health—through health promotion, prevention of disease, injury and disability, and preparedness for new health threats.</p>	<p>WEBSITE: WWW.CDC.GOV</p>

CNMI Day Care Centers

Day Care	Contact Information	Day Care	Contact Information
Golden Harvest International School & Day Care San Jose	Telephone: 235-4655	SmartStart Nurturing Center Garapan	Telephone: 233-0800 Email: smartstartspn@gmail.com
Isla Montessori School Dandan	Islamontessori.office@gmail.com	Korean Community School—Child Care Center San Antonio—Afetna	Telephone: 235-1370
Saipan SDA Child Development Center Chalan Kiya	Telephone: 234-7326/7330 Email: office@saipansdaschool.org www.saipansdaschool.org	SmartStart Nurturing Center Navy Hill	Telephone: 233-1800
Brilliant Star Montessori School Navy Hill	Telephone: 323.7827 Email: principal@brilliantstar.org www.brilliantstarmontessori.org	Green Meadow School Pure Love 1—Chalan Kiya Pure Love 2—Gualo Rai	Email: milamerjilla@yahoo.com Green_meadow07@yahoo.com
Northern Marianas International School/1st Step Day Care Center Susupe	Telephone: 234-6647/ 285-5439 www.northernmarianasinternationalschool.com	Mount Carmel School Chalan Kanoa	Telephone: 234-6187/ 235-1251
Northern Marianas International Early Head Start Program Susupe	Telephone: 234-6647/ 285-5439 www.northernmarinasinternationalschool.com	Family Home Care Koblerville	Email: Cita_galvan@yahoo.com
Gana Day Care Koblerville	Telephone: 288-4970 Email: limjs5223@gmail.com	Saint Joseph School Inc. San Jose Village, Tinian	Telephone: 287-7024 Email: saintjosephschoolinc@gmail.com
R&EQ Day/Night Care Navy Hill	Telephone: 233-7846 Email: reqchildcare@gmail.com	Loving Hands Day Care San Antonio	Telephone: 235-0611 Email: dhezjavier@yahoo.com
Holy Angel Daycare Chalan Kanoa	Telephone: 235-2907	Loving Hands Kindergarten & Enrichment Koblerville	Telephone: 235-0611 Email: dhezjavier@yahoo.com

Contact CNMI Child Care Licensing Program for approved day care centers under the Child Care and Development Fund Program or contact our office for an updated listing.



COMMONWEALTH OF THE NORTHERN MARIANA ISLANDS
PUBLIC SCHOOL SYSTEM

STUDENTS FIRST

PO BOX 501370

Saipan, MP 96950

www.MYCNMIPSS.org

State Board of Education	Tel: 237-3010
Commissioner of Education	Tel: 237-3061
Administrative Services	Tel: 664-3820
Curriculum & Instructions	Tel: 322-3506
Student and Support Services	Tel: 237-3013
Accountability, Research, & Evaluation	Tel: 237-3026
Finance	Tel: 237-3041/3087/3054
Federal Programs	Tel: 664-3832/35/36

OFFICE	LOCATION	CONTACT NUMBER
Human Resources	Capitol Hill, Building 1202	Tel: 237-3052
Procurement & Supply	Capitol Hill Building 1206	Tel: 664-3838/39
Facilities & Development Management	Capitol Hill Building 1225	Tel: 322-3716/17
Child Nutrition Program	Capitol Hill Building 1251	Tel: 664-3901/04
JROTC	Capitol Hill Building 1257	Tel: 322-6760
Pupil Transportation	Lower Base	Tel: 322-9457
Emergency Operations Management	Capitol Hill Building 1238	Tel: 322-1238



Special Education Program

PO BOX 501370

Saipan, MP 96950

Tel: 237-3015

The Special Education program provides Free Appropriate Public Education (FAPE) to eligible students ages 3 to 21 years old in the Least Restrictive Environment (LRE). Under the Individuals with Disabilities Education Act (IDEA), special education services or Part B of the Act, is defined as “specially designed instruction, at no cost to parents, to meet the unique needs of a child with a disability.”



Early Head Start / Head Start Program

PO BOX 501370

Saipan, MP 96950

Tel: 664-3751

Early Head Start (EHS) programs serve infants and toddlers under the age of 3 (Birth to Three). EHS programs provide intensive comprehensive child development and family support services to low-income infants and toddlers and their families.

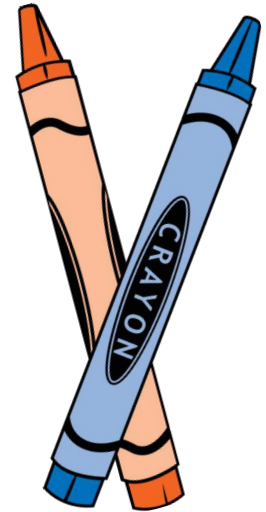
It is the Head Starts mission to empower and enable parents to assume their role as the primary educators of their children and to provide healthy, enriched child environments to meet the needs of young children.

It is the Head Starts vision that parents are the primary educators and advocates for their children throughout their lives. Partnerships with the community will strengthen the quality of education and provide a strong foundation for all children. Children and families will have a greater chance of attaining self-sufficiency and be productive in our society through knowledge and participation.

Head Start believes that when children and families are given opportunities to learn and are provided with appropriate support, effective, long range, positive changes in the community will be realized. Through collaboration and shared decision making between staff, families, and the community, the comprehensive development of each individual child is successfully achieved. Head Start values the unique strengths and culture of each child and their family.

SCHOOL LISTING

ELEMENTARY SCHOOLS	CONTACT INFORMATION
GARAPAN ELEMENTARY SCHOOL Mascot: Home of the Mighty Mallards Motto: Good is not our Goal, We Strive for Excellence	Office: 664-3957 Fax: 664-3954 SpEd: 237-3366
GREGORIO T. CAMACHO ELEMENTARY SCHOOL Mascot: Home of the Binadu Motto: Making Leaps and Bounds in Education	Office: 664-3400-02 Fax: 664-3410 SpEd: 237-3124
KAGMAN ELEMENTARY SCHOOL Mascot: Home of the Blue Marlins	Office: 237-3150 Fax: 664-3920
KOBLERVILLE ELEMENTARY SCHOOL Mascot: Home of the Hugging Umangs Motto: Reach for Tomorrow Through Education	Office: 237-3622 Fax: 664-3964 SpEd: 237-3641
OLEAI ELEMENTARY SCHOOL Mascot: Home of the Turtles	Office: 237-3503 Fax: 664-3941
SINAPALO ELEMENTARY SCHOOL Mascot: Home of the Lu'ao Motto: We Believe that all Children Can Learn	Office: 237-3567 Fax: 532-9523 SpEd: 237-4095
SAN VICENTE ELEMENTARY SCHOOL Mascot: Home of the Canaries Motto: Through Positive Thinking, Anything is Possible	Office: 237-3791 Fax: 664-3985 SpEd: 237-3799
TINIAN ELEMENTARY SCHOOL Mascot: Home of the Colts Motto: We Take the Challenge	Office: 237-3797 Fax: 433-0455 SpEd: 237-4128
WILLIAM S. REYES ELEMENTARY SCHOOL Mascot: Home of the Kingfisher Motto: Aim High, Fly High	Office: 237-3542 Fax: 664-3973 SpEd: 237-3566



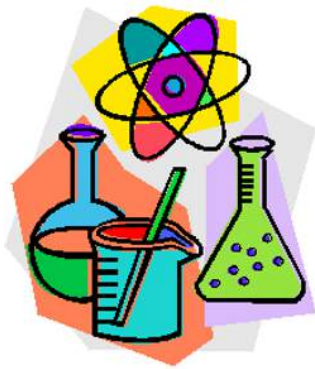
*“The **FOUNDATION** of every State is the **EDUCATION** of it **YOUTH.**”*

- DIOGENES

Greek Philosopher



MIDDLE SCHOOLS	CONTACT INFORMATION
DANDAN MIDDLE SCHOOL Mascot: Home of the Tottots Motto: Today's Studies Create Tomorrow's Dreams	Office: 237-3662 Fax: 664-5035 SpEd: Contact Office
CHACHA OCEAN VIEW MIDDLE SCHOOL Mascot: Home of the Lancherus Motto: Unity in Striving for Excellence....Lancheru Style!	Office: 237-3183 Fax: 664-4104 SpEd: Contact Office
HOPWOOD JUNIOR HIGH SCHOOL Mascot: Home of the Hilitais Motto: We Make Everyday the Best	Office: 237-3495 Fax: 664-5080 SpEd: 237-3429
DR.RITA H. INOS JR./SR. HIGH SCHOOL Mascot: Home of the Chamorro Bucks Motto: We Strive for Growth Through Quality Education to Develop Excellent Citizens	Office: 237-3654 Fax: 532-9501 SpEd: 237-4031
FRANCISCO M. SABLAN MIDDLE SCHOOL Mascot: Home of the Napu Riders Motto: We Take the Challenge	Office: 237-3582 Fax: 664-3934 SpEd: 237-3607
TANAPAG MIDDLE SCHOOL Mascot: Home of the Tataga Motto: Excellence Now	Office: 237-3188 Fax: 664-3430 SpEd: 237-3171
TINIAN JUNIOR-SENIOR HIGH SCHOOL Mascot: Home of the Stallions Motto: Charging to the Future	Office: 237-3818 Fax: 433-9275 SpEd: 237-4187



***KNOWLEDGE is POWER. Information is liberating.
Education is the premise of progress, in every society,
in every family.***

- KOFI ANNAN

7th Secretary-General, United Nations



HIGH SCHOOLS	CONTACT INFORMATION
<p>KAGMAN HIGH SCHOOL</p> <p>Mascot: Home of the Ayuyus</p> <p>Motto: United in Spirit, Leading with Courage</p>	<p>Office: 237-3196</p> <p>Fax: 664-3788</p> <p>SpEd: 237-3890</p>
<p>MARIANAS HIGH SCHOOL</p> <p>Mascot: Home of the Mighty Dolphins</p> <p>Motto: Team Effort Towards Excellence</p>	<p>Office: 237-3202</p> <p>Fax: 664-3805</p> <p>SpEd: 237-3285</p> <p>www.marianashighschool.com</p>
<p>SAIPAN SOUTHERN HIGH SCHOOL</p> <p>Mascot: Home of the Manta Rays</p> <p>Motto: Un Eskuela, Un Korason—One School, One Heart</p>	<p>Office: 237-3710</p> <p>Fax: 664-4015</p> <p>SpEd: 237-3754</p>
<p>DA'OK ACADEMY</p> <p>Mascot: Home of the Halu'u</p>	<p>Office: 237-3294/5/6</p>



CNMI Private School Listing

Agape Christian School PMB 466 Box 10001 Saipan, MP 96950-3900	Tel: 235-8540 Fax: 235-5101	Marianas Baptist Academy PO Box 500904 Saipan, MP 96950	Tel: 234-6508 Fax: 234-6508
Brilliant Star Montessori PO Box 503900 Saipan, MP 96950-3900	Tel: 323-7827 Fax: 323-7828	Mount Carmel School PO Box 500006, CK Saipan, MP 96950	Tel: 234-7188 Fax: 235-4751
Eskuelan San Francisco de Borja PO Box 840 Rota, MP 96950	Tel: 532-5000 Fax: 532-3151	Northern Marianas Academy PO Box 501310 Saipan, MP 96950	Tel: 235-5597 Fax: 235-0511
Eucon International PO Box 500087 Saipan, MP 96950	Tel: 234-3203 Fax: 235-3203	Pacific Knights Academy PO Box 502475 Saipan, MP 96950	Tel: 288-4050 Fax: 288-4050
Golden Harvest International PO Box 505704 Saipan, MP 96950	Tel: 234-4655 Fax: 235-4652	Saint Joseph PO Box 282 Tinian, MP 96950	Tel: 433-7527 Fax: 433-7527
Grace Christian Academy PO Box 500643 Saipan, MP 96950	Tel: 322-3320 Fax: 322-1855	Saipan Community School PO Box 500069 Saipan, MP 96950	Tel: 234-6687 Fax: 235-7007
Grace Christian Academy PO Box 1194 Rota, MP 96950	Tel: 532-5403	Saipan International School PO Box 503121 Saipan, MP 96950	Tel: 288-9660 Fax: 288-8847
Grace Christian Academy PO Box 520422 Tinian, MP 96950	Tel: 433-3333 Fax: 433-3332	Seventh Day Adventist Academy PO Box 501063 Saipan, MP 96950	Tel: 234-7326 Fax: 235-7326
Green Meadow School PO Box 502862 Saipan, MP 96950	Tel: 235-2185 Fax: 234-0898	Sister Remedios Early Childhood PO Box 500136 Saipan, MP 96950	Tel: 234-6244 Fax: 235-1411
Joshua Gen. Int'l Academy PO Box 503850 Saipan, MP 96950	Tel: 235-2487 Fax: 235-2487	SPN American Ed. Foundation PO Box 502213 Saipan, MP 96950	Tel: 234-8004 Fax: 234-8028
K-5 Childhood Development Center PO Box 501823 Saipan, MP 96950	Tel: 288-2507 Fax: 288-2507	Whispering Palms PO Box 10000 PMB 121 Saipan, MP 96950	Tel: 323-7451



Developmental Checklist For Young Children

1-2-3 MONTHS

- Able to raise head from surface when lying on tummy
- Pays attention to someone's face
- Moves arms & legs in energetic manner
- Likes to be held and rocked
- Smiles and coos
- Rolls part way to side when lying on back
- Grunts and sighs
- Eyes follow a moving object
- Lying on tummy, hold head up
- Grasps objects when placed in his or her hand
- Makes sucking sounds

4-5-6 MONTHS

- Holds rattle for an extended period of time
- Laughs out loud
- Sits supported for short periods of time
- Recognizes bottle and familiar faces
- Reaches for and hold objects
- Stands firmly when held
- Stretches out arms to be picked up
- Likes to play peek-a-boo
- Turns over from back to stomach
- Sits with a little support (one hand bracing)
- Listens to own voice
- Crows and squeals
- Reaches for and grasps objects and brings them to mouth
- Holds, sucks, bites cookie or cracker-begins chewing
- Babbles

7-8-9 MONTHS

- Can transfer object from one hand to the other
- Can sit for a few minutes without support
- Pats and smiles at image in mirror
- Creeps (pulling body with arms and leg kicks)
- Is shy at first with strangers
- Can sit steadily for about five minutes
- Crawls (on hands and knees)
- Grasps things with thumb and fist two fingers
- Likes to be near parent
- Says Ma-ma or Da-da
- Responds to name
- Can stand for a short time holding onto support
- Able to hit two objects together on his or her own
- Copies sound



10-11-12 MONTHS

- Able to pull self up at side of crib or playpen
- Can drink from a cup when it is held
- Can walk holding onto furniture or sides of crib or playpen
- Can find an object placed under another object
- Waves bye-bye
- Can walk with one hand held
- Says two words besides Ma-ma/Da-da
- Enjoys some solid foods
- Finger feeds self
- Likes to have an audience

15 MONTHS

- Walks by self; stops crawling
- Shows wants by pointing and gestures
- Scribbles on paper after shown
- Begins using a spoon
- Cooperates with dressing
- Names desired items

18 MONTHS

- Can build a tower with 3 blocks
- Likes to climb and take things apart
- Can say 6 words
- Tries to put on shoes
- Drinks from cup held in both hands
- Like to help a parent
- Attempts to sing a song with words

2 YEARS

- Able to run
- Walks up/down stairs using alternate feet
- Says at least 50 words
- Sometimes uses 2 word sentences
- Points to object in a book

3 YEARS

- Can repeat 2 numbers in a row
- Knows whether a boy or girl
- Dresses self expect for buttoning
- Can copy a circle
- Can follow 2 command of on, under, or behind (i.e. stand on the rug stand up, put on top)
- Knows most parts of the body
- Jumps lifting both feet off the ground
- Can build a tower with 9 blocks

This checklist is designed for you to record your child's growth and development. There is space for you to fill in the age your child performs an activity. Keep in mind that every child develops at their own pace. The checklist describes when most children usually start the activity. If your child is late performing several of the activities, you should discuss this with your child's doctor or call 664-4841 for a free developmental screening.

Disability Categories Under IDEA

Updated 2017

1. **Autism**—means a developmental disability significantly affecting verbal and nonverbal communication and social interaction, generally evident before age three, that adversely affect a child’s educational performance. Other characteristics often associated with autism are engaging in repetitive activities and stereotyped movements, resistance to environmental change or change in daily routines, and unusual responses to sensory experiences. The term autism does not apply if the child’s educational performance is adversely affected primarily because the child has an emotional disturbance, as defined in #5 below.

A child who shows the characteristics of autism after age 3 could be diagnosed as having autism if the criteria above are satisfied.

2. **Deaf-Blindness**—means concomitant [simultaneous] hearing and visual impairments, the combination of which causes such severe communication and other developmental and educational needs that they cannot be accommodated in special education programs solely for children with deafness or children with blindness.

3. **Deafness**—means a hearing impairment so severe that a child is impaired in processing linguistic information through hearing, with or without amplification, that adversely affects a child’s educational performance.

4. **Developmental Delay**—for children from birth to age three (under IDEA Part C) and children from ages three through nine (under IDEA Part B), the term developmental delay, as defined by each State, means a delay in one or more of the following areas: physical development; cognitive development; communication; social or emotional development; or adaptive [behavioral] development.

5. **Emotional Disturbance**—means a condition exhibiting one or more of the following characteristics over a long period of time and to a marked degree that adversely affects a child’s educational performance:

- (a) An inability to learn that cannot be explained by intellectual, sensory, or health factors.
- (b) An inability to build or maintain satisfactory interpersonal relationships with peers and teachers.
- (c) Inappropriate types of behavior or feelings under normal circumstances.
- (d) A general pervasive mood of unhappiness or depression.
- (e) A tendency to develop physical symptoms or fears associated with personal or school problems.

The term includes schizophrenia. The term does not apply to children who are socially maladjusted, unless it is determined that they have an emotional disturbance.

6. **Hearing Impairment**—means an impairment in hearing, whether permanent or fluctuating, that adversely affects a child’s educational performance but is not included under the definition of “deafness.”

7. **Intellectual Disability**—means significantly sub average general intellectual functioning, existing concurrently [at the same time] with deficits in adaptive behavior and manifested during the developmental period, that adversely affects a child’s educational performance.

(Editor’s Note, February 2011: “Intellectual Disability” is a new term in IDEA. Until October 2010, the law used the term “mental retardation.” In October 2010, Rosa’s Law was signed into law by President Obama. Rosa’s Law changed the term to be used in future to “intellectual disability.” The definition of the term itself did not change and is what has just been shown above.

8. Multiple Disabilities—means concomitant [simultaneous] impairments (such as intellectual disability-blindness, intellectual disability-orthopedic impairment, etc.), the combination of which causes such severe educational needs that they cannot be accommodated in a special education program solely for one of the impairments. The term does not include deaf-blindness.

9. Orthopedic Impairment—means a severe orthopedic impairment that adversely affects a child’s educational performance. The term includes impairments caused by a congenital anomaly, impairments caused by disease (e.g., poliomyelitis, bone tuberculosis), and impairments from other causes (e.g., cerebral palsy, amputations, and fractures or burns that cause contractures).

10. Other Health Impairment—means having limited strength, vitality, or alertness, including a heightened alertness to environmental stimuli, that results in limited alertness with respect to the educational environment, that—

(a) is due to chronic or acute health problems such as asthma, attention deficit disorder or attention deficit hyperactivity disorder, diabetes, epilepsy, a heart condition, hemophilia, lead poisoning, leukemia, nephritis, rheumatic fever, sickle cell anemia, and Tourette syndrome; and

(b) adversely affects a child’s educational performance.

11. Specific Learning Disability—means a disorder in one or more of the basic psychological processes involved in understanding or in using language, spoken or written, that may manifest itself in the imperfect ability to listen, think, speak, read, write, spell, or to do mathematical calculations. The term includes such conditions as perceptual disabilities, brain injury, minimal brain dysfunction, dyslexia, and developmental aphasia. The term does not include learning problems that are primarily the result of visual, hearing, or motor disabilities; of intellectual disability; of emotional disturbance; or of environmental, cultural, or economic disadvantage.

12. Speech or Language Impairment—means a communication disorder such as stuttering, impaired articulation, a language impairment, or a voice impairment that adversely affects a child’s educational performance.

13. Traumatic Brain Injury—means an acquired injury to the brain caused by an external physical force, resulting in total or partial functional disability or psychosocial impairment, or both, that adversely affects a child’s educational performance. The term applies to open or closed head injuries resulting in impairments in one or more areas, such as cognition; language; memory; attention; reasoning; abstract thinking; judgment; problem-solving; sensory, perceptual, and motor abilities; psychosocial behavior; physical functions; information processing; and speech.

The term does not apply to brain injuries that are congenital or degenerative, or to brain injuries induced by birth trauma.

14. Visual Impairment Including Blindness—means an impairment in vision that, even with correction, adversely affects a child’s educational performance. The term includes both partial sight and blindness.

Considering the Meaning of “Adversely Affects”

You may have noticed that the phrase “adversely affects educational performance” appears in most of the disability definitions. This does not mean, however, that a child has to be failing in school to receive special education and related services. According to IDEA, states must make a free appropriate public education available to “any individual child with a disability who needs special education and related services, even if the child has not failed or been retained in a course or grade, and is advancing from grade to grade.” [§300.101(c)(1)]

SOURCE: Center for Parent Information & Resources—parentcenterhub.org

